

COLUMBIA UNIVERSITY

AN OVERVIEW



COLUMBIA UNIVERSITY SCHOOLS, COLLEGES, AND AFFILIATES

COLUMBIA COLLEGE

www.college.columbia.edu

Columbia College is one of the nation's most selective institutions. The centerpiece of academic study is the Core Curriculum, which provides undergraduates with wide-ranging perspectives on literature, philosophy, history, music, art, and science.

THE FU FOUNDATION SCHOOL OF ENGINEERING AND APPLIED SCIENCE

www.engineering.columbia.edu

SEAS offers an educational experience emphasizing the fundamental principles of science and technology. Undergraduate study combines the Core Curriculum with rigorous course work and opportunities for research, service learning, and entrepreneurship. Graduate programs emphasize specialization while providing a balance of theory and application.

SCHOOL OF GENERAL STUDIES

www.gs.columbia.edu

General Studies is the finest liberal arts college in the United States created specifically for returning and nontraditional students seeking a rigorous, traditional undergraduate degree full or part time.

GRADUATE SCHOOL OF ARTS AND SCIENCES

www.columbia.edu/cu/gsas

GSAS is one of the most distinguished graduate schools in the United States. Our renowned faculty provides MA and PhD students with advanced knowledge in the humanities and natural and social sciences while preparing them for a variety of careers. We encourage responsible scholarly research and connections between academia and our urban, national, and global environment.

GRADUATE SCHOOL OF ARCHITECTURE, PLANNING AND PRESERVATION

www.arch.columbia.edu

GSAPP's international leadership role invites all the disciplines devoted to the built environment to think differently. Its mission is to move beyond the highest level of professional training to open a creative space of speculation, experimentation, and analysis that allows the field to find new forms of professional, scholarly, technical, and ethical practice.

SCHOOL OF THE ARTS

www.columbia.edu/cu/arts

SOA is a vibrant intellectual and artistic laboratory where students work, experiment, and learn under the guidance of professors acclaimed in their fields of Film, Theatre Arts, Visual Arts, and Writing.

GRADUATE SCHOOL OF BUSINESS

www.gsb.columbia.edu

The school's global education prepares students for lifetime leadership in any industry. Its curriculum bridges pioneering research and industry practice and fosters the entrepreneurial mindset. Through its thought leadership, broad alumni network, and extensive New York connections, the school ranks among the world's most innovative, dynamic business communities.

SCHOOL OF CONTINUING EDUCATION

www.ce.columbia.edu

SCE offers innovative programs that meet Columbia's standard of excellence, including professional master's degrees, courses for graduate school preparation and academic advancement, pre-college programs for high school students, courses in English as a second language, and the University's Summer Term courses.

SCHOOL OF INTERNATIONAL AND PUBLIC AFFAIRS

www.sipa.columbia.edu

For more than sixty years, SIPA has been educating professionals who make a difference. Through rigorous research and hands-on practice, graduates and faculty work to improve social services, advocate for human rights, strengthen markets, protect the environment, and secure peace around the world.

GRADUATE SCHOOL OF JOURNALISM

www.journalism.columbia.edu

The Graduate School of Journalism educates students to work in all news media, covering a wide range of complicated subjects. Our faculty, a diverse group of award-winning professionals, work closely with students to provide a foundation for our graduates to become industry leaders who shape the future of journalism.

SCHOOL OF LAW

www.law.columbia.edu

Columbia Law School is among the oldest and most distinguished law schools in America. Its faculty and graduates have a long tradition of private practice and public service in the judiciary, government, and public interest organizations, contributing to the development of law in the United States and throughout the world.

SCHOOL OF SOCIAL WORK

www.columbia.edu/cu/ssw

For 110 years, SSW has distinguished itself with intellectual creativity and leadership in research, studies, and field education that have had a multidisciplinary impact. Faculty members conduct research and service programs globally and provide their expertise to leaders in academia, government, and the private sector.

COLLEGE OF PHYSICIANS AND SURGEONS

www.columbia.edu/medical

P&S is one of the most selective medical schools in the nation. Its faculty, among the most highly regarded clinicians and physician-scientists in academic medicine, prepare students to be medical leaders while working to solve intractable health challenges through clinical, laboratory, and translational research.

MAILMAN SCHOOL OF PUBLIC HEALTH

www.mailman.columbia.edu

The Mailman School has been on the cutting edge of public health research, education, and service for more than 85 years. The school is a global presence built on local excellence. With its world-class faculty and talented, diverse students, the Mailman School is developing knowledge and affecting change locally and globally.

COLLEGE OF DENTAL MEDICINE

www.dental.columbia.edu

The College of Dental Medicine provides an academically and clinically superior education in an environment that encourages students to take advantage of the educational opportunities in such diverse areas as public health, informatics, and biomedical research.

SCHOOL OF NURSING

www.nursing.columbia.edu

The School of Nursing is part of one of the world's most renowned academic health centers, a vital neighborhood collaborating on research, education, and clinical care.

AFFILIATE SCHOOLS

The following affiliates are independent institutions with their own boards of trustees, governance structures, policies, and academic processes.

BARNARD COLLEGE

www.barnard.edu

Barnard was the first college in New York City, and one of the few in the nation, where women could receive the same rigorous education available to men. Today, Barnard educates more than 2,300 bright, independent-minded women in an intimate liberal arts setting and is the most sought-after women's college in the country.

TEACHERS COLLEGE

www.tc.columbia.edu

Teachers College is the oldest and largest U.S. graduate school of education, perennially ranked among the nation's best. Working across its three main emphases—teacher preparation, nursing education, and psychology—TC prepares and informs policymakers and practitioners to better serve students, families, schools, and communities.

THE JEWISH THEOLOGICAL SEMINARY

www.jtsa.edu

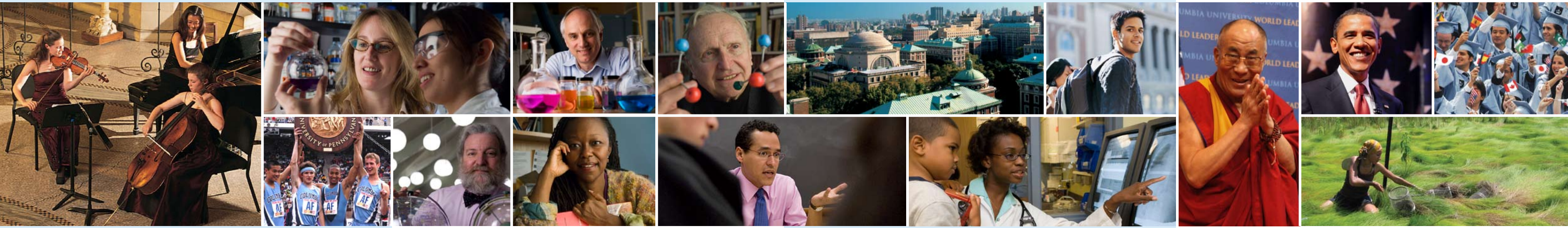
JTS trains tomorrow's religious, educational, academic, and lay leaders for the Jewish community and beyond through its five schools and world-class library. List College, the undergraduate school, offers dual-degree programs with Columbia University/Barnard College. Students receive two bachelor's degrees, one from Columbia/Barnard and one from JTS.

UNION THEOLOGICAL SEMINARY

www.utsnyc.edu

Founded in 1836, Union has always embodied the freedom to learn and to teach, with a vision of education centered on academic excellence and personal faith. Union remains committed to that vision, as it responds to the changing needs of our city and world with an evolving understanding of what it means to be faithful.





THE STUDENT EXPERIENCE

COLUMBIA'S VIBRANT CAMPUS COMMUNITY DERIVES NOT ONLY FROM THE DAILY ENGAGEMENT OF ACCOMPLISHED STUDENTS AND RENOWNED FACULTY, BUT ALSO FROM THE EXTRAORDINARY ENERGY, TALENT, AND CULTURAL DIVERSITY THAT DEFINES NEW YORK CITY.

Columbia is a global leader in higher education because of its ability to attract highly accomplished students and scholars from around the world. The admission rate for Columbia College and the Fu Foundation School of Engineering and Applied Science for the incoming Class of 2012 was a combined 10 percent, the lowest in the University's history. Columbia's acclaimed graduate and professional schools continue to build on their well-established excellence and stature. The University's talented students and faculty from some 150 countries engage each other in the breadth of cultural, scientific, and business enterprises that make New York one of the most exciting places in the world.

During the past five years, Columbia has added **73 new degree programs** and increased the international breadth of the curricula.

The Core Curriculum, an ever-evolving set of common courses on classic texts and contemporary issues required of all Columbia College undergraduates, provides a unique intellectual grounding for critical thinking skills.

Nearly 25,000 Columbia students can embrace the arts through more than **80 arts organizations** on campus, as well as New York's unmatched cultural scene.

Thousands of Columbia students, faculty, and alumni participate in **service learning**, community engagement, and social entrepreneurship projects locally, across the nation, and around the world.

Through mentorship programs and other activities, students are connected to more than **270,000 alumni worldwide** through the Columbia Alumni Association.

FACULTY AND RESEARCH

"COLUMBIA HAS BEEN ONE OF THE WORLD'S GREAT RESEARCH UNIVERSITIES FOR MORE THAN A CENTURY, AND THE RANGE OF SCHOLARSHIP PRODUCED BY ITS FACULTY AND ITS INFLUENCE IN THE WORLD CONTINUE TO BE EXTRAORDINARY."
—PROVOST ALAN BRINKLEY

Columbia prides itself on the excellence of its faculty—as scholars, teachers, artists, and innovators. Columbia was one of the first research universities in the United States and remains at the forefront of groundbreaking advances in new areas of knowledge. The University values the depth of scholarship and the diverse international character of its faculty. That diversity contributes to Columbia's preeminence among the world's best colleges and universities.

Seventy-eight Columbians—alumni, faculty, researchers, and administrators—have won **Nobel Prizes**. Nine current faculty members are Nobel laureates in medicine, economics, physics, and literature.

Two Columbia scientists were among the first seven recipients of the inaugural **Kavli Prize** awarded in the fields of nanoscience, neuroscience, and astrophysics.

Columbia has more than **2,000 international faculty**, researchers, visiting scholars, and scientists.

The list of **pioneering discoveries** made by Columbia faculty includes FM radio, lasers, X-ray photography, atomic fission, global warming, and a long list of medical breakthroughs.

Columbia's faculty includes **99 members of the National Academies**, which include the National Academy of Science, the National Academy of Engineering, and the Institute of Medicine.

COLUMBIA IN NEW YORK

"YOU CANNOT BE A GREAT INSTITUTION, YOU CANNOT DO GREAT SCHOLARSHIP, AND YOU CERTAINLY CANNOT DO GREAT TEACHING UNLESS YOU ARE VERY MUCH A PART OF THE LOCAL PLACE IN WHICH YOU LIVE."
—PRESIDENT LEE C. BOLLINGER

There is extraordinary breadth and depth to the ways in which New York City and the University—through its students, faculty, alumni, and staff—affect each other. Columbia's identity has been shaped by being in New York. And much of the city's history has been shaped by Columbians. Through community partnerships and service programs, employment opportunities and economic impact, basic and applied research, intellectual and cultural contributions, Columbia and New York are woven together into the fabric of academic and urban life.

Columbia University is the **seventh largest nongovernmental employer** in the City of New York.

Columbia engineers have been responsible for much of the design of New York's great buildings, bridges, tunnels, and monuments. The city's **subway system** and street grid were **designed by Columbians**.

Columbia University Medical Center is a world leader in biomedical research, education, and treatment, and its 1,200 clinical faculty members provide care through some 800,000 patient visits each year.

Columbia maintains **hundreds of community partnerships** in Harlem and Washington Heights, from local public schools and after-school programs to free health clinics and legal aid, including a long-term affiliation with Harlem Hospital.

Columbia has a **long tradition of public service**. President Barack Obama graduated from Columbia College; 13 alumni have served as New York governor, including current Gov. David Paterson; 15 Columbians have served as mayor of New York City.

COLUMBIA IN THE WORLD

COLUMBIA IS A LEADING INTERNATIONAL UNIVERSITY IN THE HEART OF THE WORLD'S MOST INTERNATIONAL CITY.

Columbia's long history of international study and engagement is reflected in the University's mission to prepare students to navigate and lead in an increasingly interconnected world. The interdisciplinary nature of Columbia's academic programming, its international partnerships, its contributions, and the diverse backgrounds of its students, faculty, and alumni all contribute to this global character. Columbia's international commitment reflects the belief that academic institutions have a responsibility to provide analyses and perspectives that inform policy and broaden world understanding of the critical issues of our time.

Columbia offers **dozens of dual-degree programs** with peer institutions around the globe and is opening new regional research centers in Asia, Africa, South America, and the Middle East.

Through model projects on **AIDS/HIV and malaria in Africa** and **clean water infrastructure in rural South Asia**, Columbia is making a difference around the globe.

Columbia University is a world leader in **environmental research and policy**. Working across disciplines and through centers such as the Earth Institute, Lamont-Doherty Earth Observatory, and Columbia Climate Center, University researchers are working to find solutions for sustainable development.

Columbia's **World Leaders Forum** gives students and faculty a regular opportunity to engage in discussion with international heads of state and global thought leaders.

FOR MORE THAN 250 YEARS, COLUMBIA

has been a leader in higher education in the nation and around the world. At the core of our wide range of academic inquiry is the commitment to attract and engage the best minds in pursuit of greater human understanding, pioneering new discoveries, and service to society.

Our distinguished faculty, alumni, and student body are expanding the boundaries of knowledge in medicine, science, the arts, humanities, and the professions. The University offers an outstanding and comprehensive array of academic programs. These include three undergraduate schools, thirteen graduate and professional schools, a world-renowned medical center, four affiliated colleges and seminaries, twenty-five libraries, and more than one hundred research centers and institutes.

Columbia is both global and local in focus. As a vital part of New York, our research and teaching are enhanced by the vast resources of one of the world's greatest cities. We are an intellectual community of some 40,000 students, faculty, and staff who work continually to expand our mission of teaching, research, patient care, and public service.

Columbia University in the City of New York
116th Street and Broadway
New York, NY 10027
www.columbia.edu

 **COLUMBIA UNIVERSITY**
IN THE CITY OF NEW YORK

